

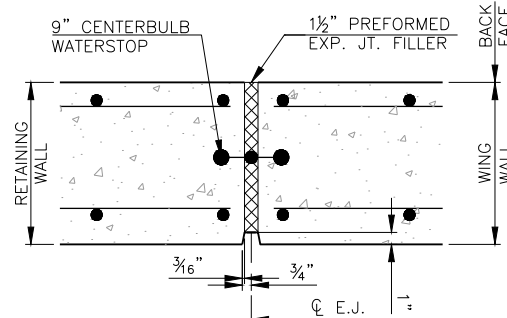
DESCRIPTION	REVISIONS	DATE

NOTES:  
WALL DIMENSIONS SHOWN AT THE TOP OF THE BACK FACE OF THE WING WALL.

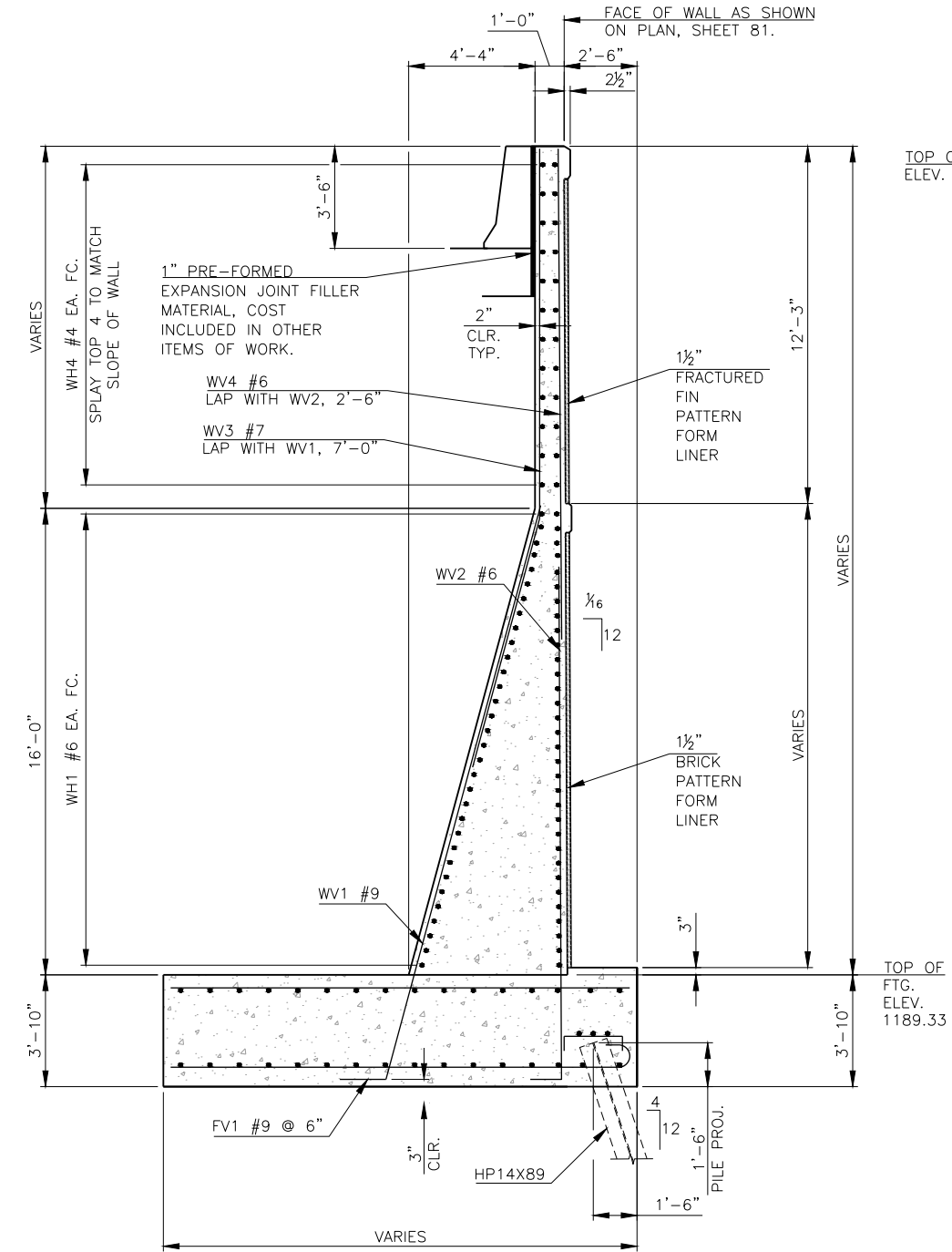
FOR ADDITIONAL DETAIL OF FOOTING REINFORCEMENT, SEE THE FOOTING REINFORCEMENT PLAN ON SHEET 82.

WATERSTOP SHALL BE PLACED FROM TOP OF FOOTING TO 3'-6" FROM TOP OF WALL AND EXP. JT. FILLER SHALL BE PLACED THE FULL HEIGHT OF WALL. COST SHALL BE INCLUDED IN OTHER ITEMS OF WORK.

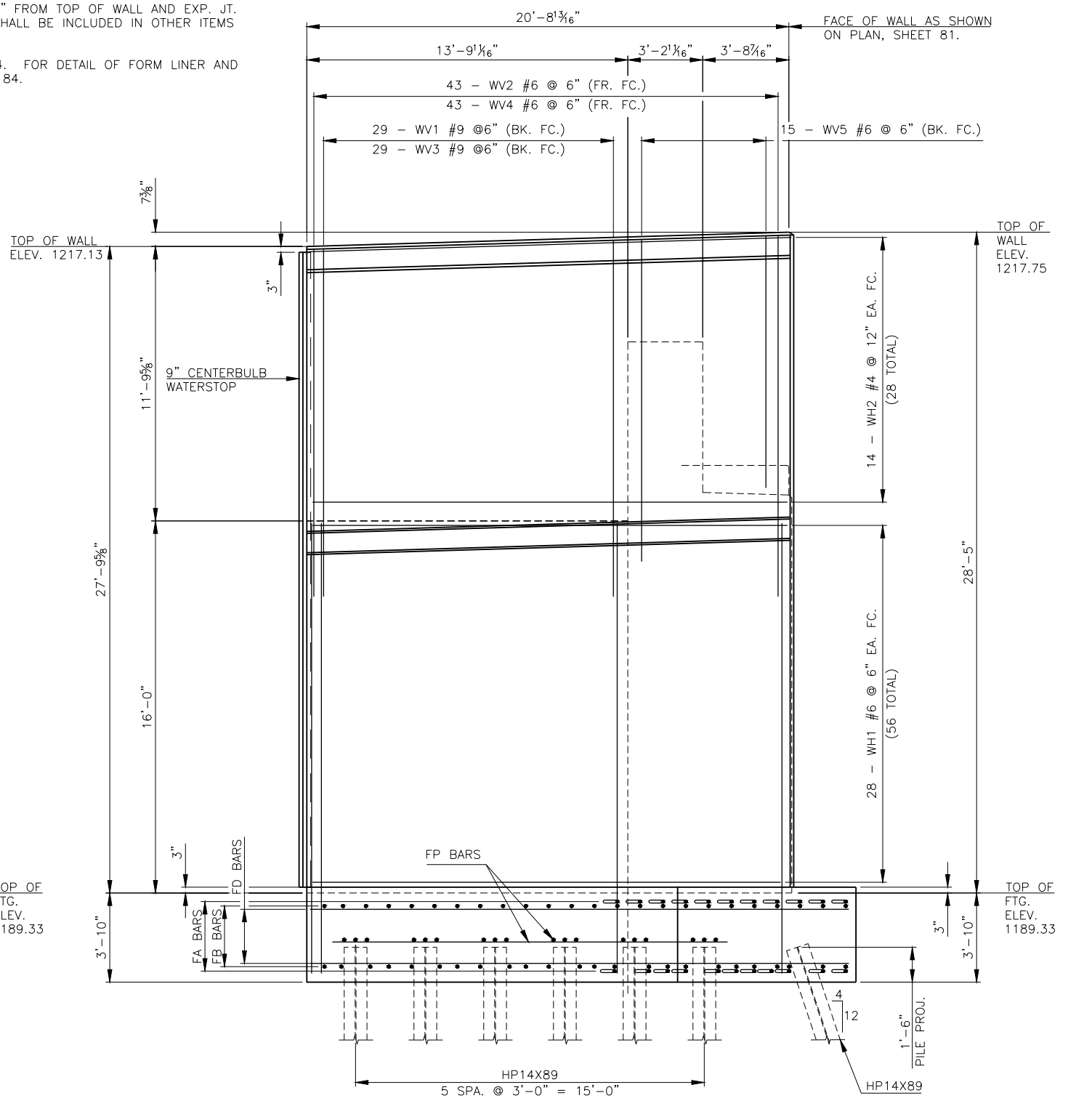
FOR DETAIL OF CLEAR COVER WITH FORM LINER, SEE SHEET 84. FOR DETAIL OF FORM LINER AND CHAMFER STRIPS, SEE SECTION C-C THROUGH E-E ON SHEET 84.



**EXPANSION JOINT  
WING WALL JOINT DETAILS**



**SECTION THRU WING**



**WING ELEVATION**

PLACE ALL WH WING REINFORCING TIED TO ABUTMENT SEAT AND BACKWALL REINFORCING PRIOR TO PLACING ABUTMENT SEAT AND BACKWALL CONCRETE.

DESIGN	T.A.C.
DRAWN	R.A.P.
CHECKED	T.A.C.
APPROV.	T.A.C.
SQUAD	CEC

OKLAHOMA CITY BLVD. OKLAHOMA COUNTY  
OVER CLASSEN BLVD. BRIDGE A

**ABUTMENT NO. 1 -  
WING DETAILS**

JOB PIECE NO. 17428(88) SHEET NO. 85